



## 220 KV Hot Dip Angle Galvanized Steel High Voltage Electric Power Transmission Line Tower

You are welcomed to come to our factory to buy the latest selling, low price, and high-quality 220 KV Hot Dip Angle Galvanized Steel High Voltage Electric Power Transmission Line Tower, Mao Tong looks forward to cooperating with you. Mao Tong actively use scientific and technical means to ensure product quality, to meet the needs of tower

users.

### Product Description

As the professional manufacturers, Mao Tong would like to provide you 220 KV Hot Dip Angle Galvanized Steel High Voltage Electric Power Transmission Line Tower.

The 220 KV Hot Dip Angle Galvanized Steel High Voltage Electric Power Transmission Line Tower will be mass-produced from high-strength steel.

With the rapid development of power grid construction, the consumption demand for steel materials for power towers is increasing. According to the current construction needs, the demand for just kinds of steel is also converted from ordinary steel to special steel, so as to take a share of the overall service life of power towers.

At present, the 220 KV Hot Dip Angle Galvanized Steel High Voltage Electric Power Transmission Line Tower market, the demand for profiles is mainly focused on what? The raw material that basically uses on the market now is steel section steel, have Angle steel, steel plate, flat steel, round steel, steel tube, channel steel to wait. With the increasingly perfect construction of the power grid, the quality construction of the iron tower is more rigorous, and some specific areas began to use Q390, Q420, Q460 and other high-strength steel. Thus comprehensively improve the overall service life of the power tower.

High voltage tower is divided into straight line tower and tensioning tower, corner tower is one kind of tensioning tower, cat-head tower is one kind of straight line tower. 2. Shape straight line tower, insulator is vertically suspended cat-head tower, tensioning tower, insulator is horizontal, used to prevent coupling ring inverted tower, line turning, etc. 3. 10KV, 3-5 pieces, 35KV, 7 pieces 110KV, 14-16 pieces 220KV, 28 pieces 500KV, if you watch more, you don't need to count, you can see the length roughly.

The transmission tower is the support point of the overhead line. If one loop is set up on the transmission tower, it is a single loop transmission tower, and if two loops are set up on the transmission tower, it is a double loop transmission tower. Single loop refers to a load with a

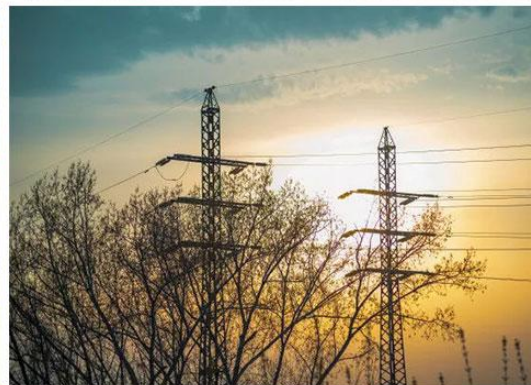


power supply loop; A double circuit is a circuit with two power supplies for a load.

Generally, enterprises with high requirements for power supply reliability or important regional substations adopt double-circuit power supply, so that one power supply can be protected from power failure and the other power supply can continue to supply power. However, small and medium-sized users with low reliability requirements often use single power supply.

Transmission line tower mainly bears wind load, ice load, line tension, constant load, personnel and tool weight during installation or maintenance, line break, earthquake and other loads. The reasonable combination of these loads under different meteorological conditions should be considered in the design.

The constant loads include the weight of tower, wire, metalware and insulator, the resultant Angle of the line and the unbalance tension along the line. Different countries have different regulations on the number of broken wires (generally not simultaneous broken wires and lightning arrestors), the tension of broken wires and meteorological conditions when broken wires are considered.





Please Notice

Why do you choose maotong products?  
Professional Supplier. Quality be Promised,Customize  
Support,Good Service

Directly profits to the buyers, because we are manufacturers

Phone/Whatsapp:

+8615726262672

8613668856550

